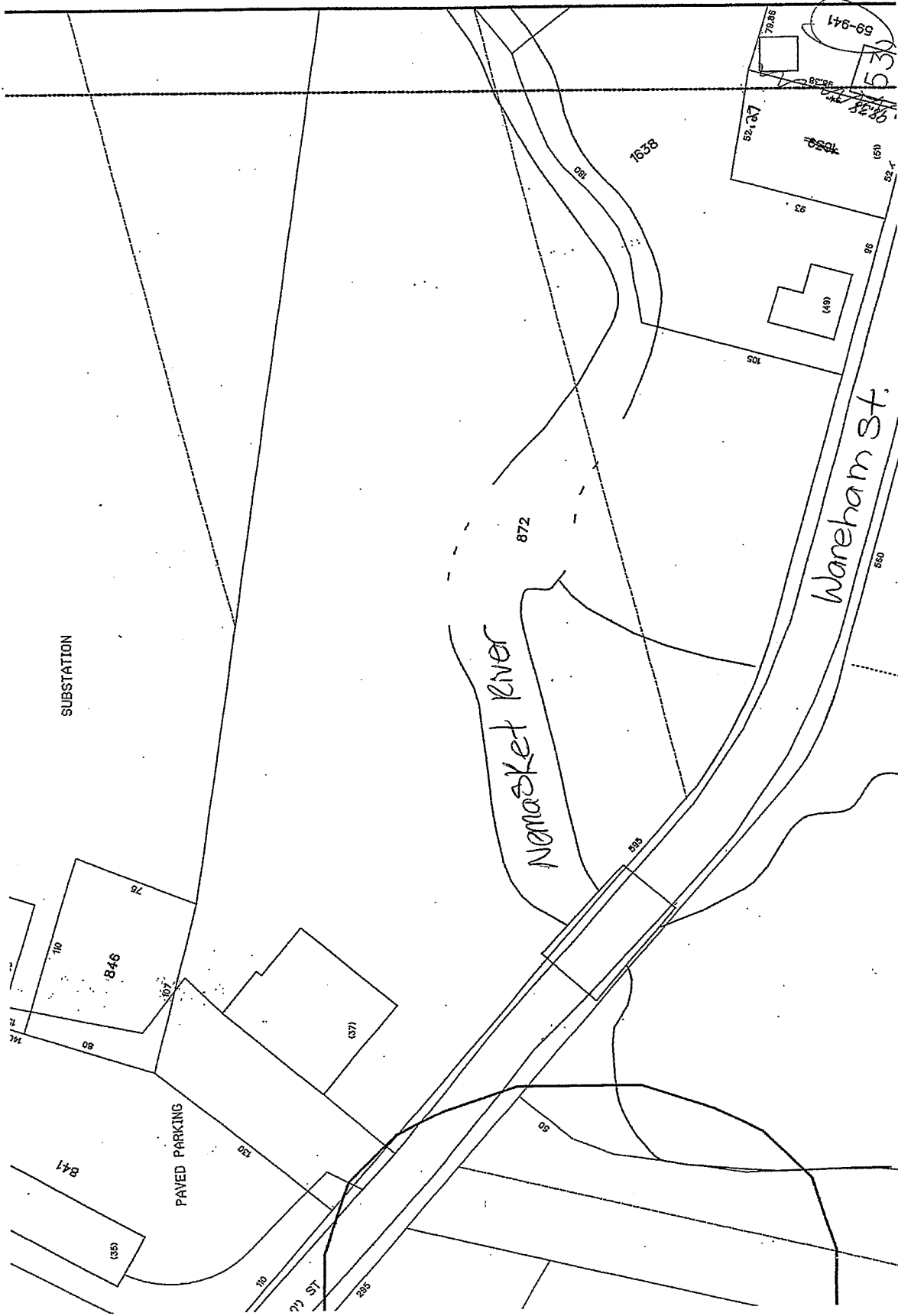


Wareham St. Herring Zur
Map 58 D Lot 872

- 1.31 Acres
- 25700.00 SQ FT
- 3.89 Acres
- 14375.00 SQ FT
- 7405.00 SQ FT
- 11614.00 SQ FT
- 9165.00 SQ FT
- 10890.00 SQ FT
- 6.47 Acres
- 8712.00 SQ FT
- 11761.00 SQ FT
- 17424.00 SQ FT
- 10890.00 SQ FT
- 15671.00 SQ FT
- 4791.00 SQ FT
- 2.04 Acres
- 16117.00 SQ FT
- 26970.00 SQ FT

- 841
- 846
- 872
- 1514
- 1541
- 1542
- 1545
- 1549
- 1565
- 1571
- 1575
- 1578
- 1581
- 1638
- 1658
- 1669
- 1696



10/2/2010/10/20/2010

53
59-941

Map 58D, Lot 87Z

Facility Inventory ^{5/26/10} LOCATION: Wareham St. - Herring Run

ACTIVITY	EQUIPMENT	NOTES
Picnic Facilities	Tables & Benches	Located adjacent to accessible paths
		Access to Open Spaces
	Grills	Back and Arm Rests
		Adequate number
	Trash Cans	Height of Cooking Surface
Picnic Shelters	Located adjacent to accessible paths	
	Located adjacent to accessible paths	
Trails <i>path - Crushed Stone - Brick - near river problem</i>	Crushed Stone Brick near river problem	Located near accessible water fountains, trash can, restroom, parking, etc.
		Surface material
		Dimensions
		Rails
		Signage (for visually impaired)
Swimming Facilities	Pools	Entrance
		Location from accessible parking
	Beaches	Safety features i.e. warning for visually impaired
		Location from accessible path into water
		Handrails
Play Areas (tot lots)	All Play Equipment i.e. swings, slides	Location from accessible parking
	Access Routes	Shade provided
		Same experience provided to all
Game Areas: *ballfield *basketball *tennis	Access Routes	Located adjacent to accessible paths
		Enough space between equipment for wheelchair
	Equipment	Berm cuts onto courts
		Height
		Spectator Seating
Boat Docks	Access Routes	Located adjacent to accessible paths
		Handrails
Fishing Facilities	Access Routes	Located adjacent to accessible paths
		Handrails
	Equipment	Arm Rests
		Bait Shelves
		Handrails
Programming	Are special programs at your facilities accessible?	Fish Cleaning Tables
		Learn-to-Swim
		Guided Hikes
Services and Technical Assistance		Interpretive Programs
		Information available in alternative formats i.e. for visually impaired
		Process to request interpretive services (i.e. sign language interpreter) for meetings

LOCATION Wareham St. Hemming Run

PARKING		Required Accessible Spaces	
Total Spaces	<u>7</u>		
Up to 25		1 space	
26-50		2 spaces	
51-75		3 spaces	
76-100		4 spaces	
101-150		5 spaces	
151-200		6 spaces	
201-300		7 spaces	
301-400		8 spaces	
401-500		9 spaces	
Specification for Accessible Spaces	Yes	No	Comments/Transition Notes
Accessible space located closest to accessible entrance	✓		(1) no van
Where spaces cannot be located within 200 ft of accessible entrance, drop-off area is provided within 100 ft.			N/A
Minimum width of 13 ft includes 8 ft space plus 5 ft access aisle			not marked
Van space— minimum of 1 van space for every accessible space, 8 ft wide plus 8 ft aisle. Alternative is to make all accessible spaces 11 ft wide with 5 ft aisle.		✓	
Sign with international symbol of accessibility at each space or pair of spaces	✓		
Sign minimum 5 ft, maximum 8 ft to top of sign	✓		
Surface evenly paved or hard-packed (no cracks)	✓		
Surface slope less than 1:20, 5%	OK		
Curbcut to pathway from parking lot at each space or pair of spaces, if sidewalk (curb) is present			N/A
Curbcut is a minimum width of 3 ft, excluding sloped sides, has sloped sides, all slopes not to exceed 1:12, and textured or painted yellow			N/A
RAMPS			
Specification	Yes	No	Comments/Transition Notes
Slope Maximum 1:12			N/A
Minimum width 4 ft between handrails			
Handrails on both sides if ramp is longer than 6 ft			
Handrails at 34" and 19" from ramp surface			
Handrails extend 12" beyond top and bottom			
Handgrip oval or round			
Handgrip smooth surface			
Handgrip diameter between 1 1/4" and 2"			
Clearance of 1 1/2" between wall and wall rail			
Non-slip surface			
Level platforms (4ft x 4 ft) at every 30 ft, at top, at bottom, at change of direction			

LOCATION

Wareham St. Herring Run

SITE ACCESS, PATH OF TRAVEL, ENTRANCES

Specification	Yes	No	Comments/Transition Notes
Site Access			
Accessible path of travel from passenger disembarking area and parking area to accessible entrance		✓	
Disembarking area at accessible entrance	✓		
Surface evenly paved or hard-packed		✓	
No ponding of water		✓	
Path of Travel			
Path does not require the use of stairs	✓		
Path is stable, firm and slip resistant		✓	
3 ft wide minimum	✓		
Slope maximum 1:20 (5%) and maximum cross pitch is 2% (1:50).		✓	steep
Continuous common surface, no changes in level greater than 1/2 inch		✓	Prob - xing over run (need ramp)
Any objects protruding onto the pathway must be detected by a person with a visual disability using a cane			N/A
Objects protruding more than 4" from the wall must be within 27" of the ground, or higher than 80"			N/A
Curb on the pathway must have curb cuts at drives, parking and drop-offs			N/A
Entrances			
Primary public entrances accessible to person using wheelchair, must be signed, gotten to independently, and not be the service entrance		✓	Bldg - N/A
Level space extending 5 ft. from the door, interior and exterior of entrance doors			
Minimum 32" clear width opening (i.e. 36" door with standard hinge)			
At least 18" clear floor area on latch, pull side of door			
Door handle no higher than 48" and operable with a closed fist			
Vestibule is 4 ft plus the width of the door swinging into the space			
Entrance(s) on a level that makes elevators accessible			
Door mats less than 1/2" thick are securely fastened			
Door mats more than 1/2" thick are recessed			
Grates in path of travel have openings of 1/2" maximum			
Signs at non-accessible entrance(s) indicate direction to accessible entrance			
Emergency egress - alarms with flashing lights and audible signals, sufficiently lighted			

NOTES

NOTES

LOCATION

Wareham St. Herring RMP
N/A

FLOORS, DRINKING FOUNTAINS, TELEPHONES

Specification	Yes	No	Comments/Transition Notes
Floors			
Non-slip surface			
Carpeting is high-density, low pile, non-absorbent, stretched taut, securely anchored			
Corridor width minimum is 3 ft			
Objects (signs, ceiling lights, fixtures) can only protrude 4" into the path of travel from a height of 27" to 80" above the floor			
Drinking Fountains			
Spouts no higher than 36" from floor to outlet			
Hand operated push button or level controls			
Spouts located near front with stream of water as parallel to front as possible			
If recessed, recess a minimum 30" width, and no deeper than depth of fountain			
If no clear knee space underneath, clear floor space 30" x 48" to allow parallel approach			
Telephones			
Highest operating part a maximum 54" above the floor			
Access within 12" of phone, 30" high by 30" wide			
Adjustable volume control on headset so identified			

SIGNS, SIGNALS, AND SWITCHES

Specification	Yes	No	Comments/Transition Notes
Switches, Controls and Signs			
Switches and controls for light, heat, ventilation, windows, fire alarms, thermostats, etc, must be a minimum of 36" and a maximum of 48" above the floor for a forward reach, a maximum of 54" for a side reach			
Electrical outlets centered no lower than 18" above the floor			
Warning signals must be visual as well as audible			
Signs			
Mounting height must be 60" to centerline of the sign			
Within 18" of door jamb or recessed			
Letters and numbers at least 1/4" high			
Letters and numbers raised .03"			
Letters and numbers contrast with the background color			

NOTES

LOCATION Wareham St. Heming Run
N/A

SWIMMING POOLS - accessibility can be via ramp, lifting device, or transfer area			
Specification	Yes	No	Comments/Transition Notes
Ramp at least 34" wide with a non-slip surface extending into the shallow end, slope not exceeding 1:6 with handrails on both sides			
Lifting device			
Transfer area 18" above the path of travel and a minimum of 18" wide			
Unobstructed path of travel not less than 48" wide around pool			
Non-slip surface			

LOCATION N/A

SHOWER ROOMS - Showers must accommodate both wheel-in and transfer use			
Specification	Yes	No	Comments/Transition Notes
Stalls 36" by 60" minimum, with a 36" door opening			
Floors are pitched to drain the stall at the corner farthest from entrance			
Floors are non-slip surface			
Controls operate by a single lever with a pressure balance mixing valve			
Controls are located on the center wall adjacent to the hinged seat			
Shower heads attached to a flexible metal hose			
Shower heads attached to wall mounting adjustable from 42" to 72" above the floor			
Seat is hinged and padded and at least 16" deep, folds upward, securely attached to side wall, height is 18" to the top of the seat, and at least 24" long			
Soap trays without handhold features unless they can support 250 pounds			
2 grab bars are provided, one 30" and one 48" long, or one continuous L shaped bar			
Grab bars are placed horizontally at 36" above the floor line			

LOCATION 3 Areas (3 Tables)

PICNICKING			
Specification	Yes	No	Comments/Transition Notes
A minimum of 5% of the total tables must be accessible with clear space under the table top not less than 30" wide and 19" deep per seating space and not less than 27" clear from the ground to the underside of the table. An additional 29" clear space (totaling 48") must extend beyond the 19" clear space under the table to provide access			✓ none of Areas
For tables without toe clearance, the knee space under the table must be at least 28" high, 30" wide and 24" deep.			✓
Top of table no higher than 32" above ground	✓		
Surface of the clear ground space under and around the table must be stable, firm and slip-resistant, and evenly graded with a maximum slope of 2% in all directions			✓ Grass
Accessible tables, grills and fire rings must have clear ground space of at least 36" around the perimeter			✓

~~Two~~ Benches near river
Three (Two easier to get to)

