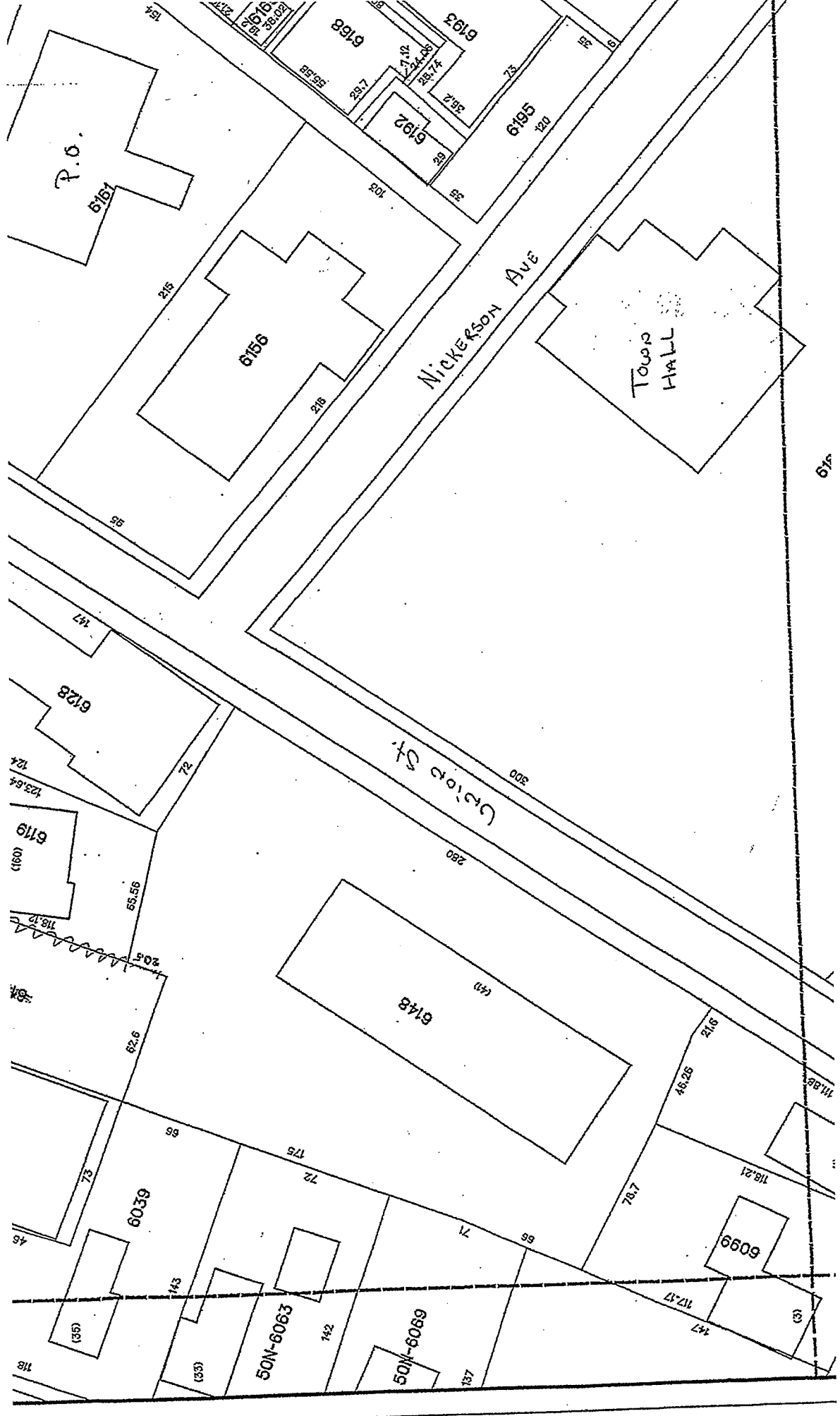


✓ (Massasoit now)
Lincoln D. Lynch School

M 507. L 6148



OK - Have passed inspections - per Judy Bigelow
Costa

LOCATION: Lincoln D. Lynch School (LSD)

ACTIVITY	EQUIPMENT	NOTES	
Picnic Facilities	Tables & Benches	Located adjacent to accessible paths	
		Access to Open Spaces	
	Grills	Back and Arm Rests	
		Adequate number	
	Trash Cans	Height of Cooking Surface	
		Located adjacent to accessible paths	
	Picnic Shelters	Located adjacent to accessible paths	
		Located near accessible water fountains, trash can, restroom, parking, etc.	
	Trails	N/A	Surface material
			Dimensions
Swimming Facilities	Pools	Signage (for visually impaired)	
		Entrance	
	Pools	Location from accessible parking	
		Safety features i.e. warning for visually impaired	
	Beaches	Location from accessible path into water	
		Handrails	
	Play Areas (tot lots)	N/A	Location from accessible parking
			Shade provided
	Game Areas: *ballfield *basketball *tennis	N/A	Same experience provided to all slides
			Access Routes
Boat Docks	N/A	Enough space between equipment for wheelchair	
		Located adjacent to accessible paths	
Fishing Facilities	N/A	Located adjacent to accessible paths	
		Access Routes	
Programming	N/A	Spectator Seating	
		Access Routes	
Services and Technical Assistance	N/A	Height	
		Dimensions	
Information available in alternative formats i.e. for visually impaired	N/A	Berm cuts onto courts	
		Located adjacent to accessible paths	
Are special programs at your facilities accessible?	N/A	Located adjacent to accessible paths	
		Handrails	
Interpretive Programs	N/A	Handrails	
		Arm Rests	
Process to request interpretive services (i.e. sign language interpreter) for meetings	N/A	Bait Shelves	
		Handrails	
Fish Cleaning Tables	N/A	Handrails	
		Learn-to-Swim	
Guided Hikes	N/A	Fish Cleaning Tables	
		Interpretive Programs	

LOCATION	Required Accessible Spaces	Specification for Accessible Spaces	Yes	No	Comments/Transition Notes
PARKING	Total Spaces				
	Up to 25				
	1 space				
	2 spaces				
	3 spaces				
	4 spaces				
	5 spaces				
	6 spaces				
	7 spaces				
	8 spaces				
	9 spaces				
	401-500	Specification for Accessible Spaces	Yes	No	Comments/Transition Notes
	301-400	Accessible space located closest to accessible entrance			
	201-300	Where spaces cannot be located within 200 ft of accessible entrance, drop-off area is provided within 100 ft.			
	151-200	Minimum width of 13 ft includes 8 ft space plus 5 ft access aisle			
	101-150	Van space - minimum of 1 van space for every accessible space, 8 ft wide plus 8 ft aisle. Alternative is to make all accessible spaces 11 ft wide with 5 ft aisle.			
	76-100	Sign with international symbol of accessibility at each space or pair of spaces			
	51-75	Sign minimum 5 ft, maximum 8 ft to top of sign			
	26-50	Surface evenly paved or hard-packed (no cracks)			
	1	Surface slope less than 1:20, 5%			
		Curbside to pathway from parking lot at each space or pair of spaces, if sidewalk (curb) is present			
		Curbside is a minimum width of 3 ft, excluding sloped sides, has sloped sides, all slopes not to exceed 1:12, and textured or painted yellow			
		RAMPS			
		Specification	Yes	No	Comments/Transition Notes
		Slope Maximum 1:12			
		Minimum width 4 ft between handrails			
		Handrails on both sides if ramp is longer than 6 ft			
		Handrails at 34" and 19" from ramp surface			
		Handrails extend 12" beyond top and bottom			
		Handgrip oval or round			
		Handgrip smooth surface			
		Handgrip diameter between 1 1/4" and 2"			
		Clearance of 1 1/2" between wall and wall rail			
		Non-slip surface			
		Level platforms (4ft x 4 ft) at every 30 ft, at top, at bottom, at change of direction			

Also use Town Hall Parking lot
LPL

LOCATION
15C

SITE ACCESS, PATH OF TRAVEL, ENTRANCES		Yes	No	Comments/Transition Notes
Site Access				
Specification				
Accessible path of travel from passenger disembarking area and parking area to accessible entrance				
Disembarking area at accessible entrance				
Surface evenly paved or hard-packed				
No ponding of water				
Path of Travel				
Path does not require the use of stairs				
Path is stable, firm and slip resistant				
3 ft wide minimum				
Slope maximum 1:20 (5%) and maximum cross pitch is 2% (1:50).				
Continuous common surface, no changes in level greater than 1/2 inch				
Any objects protruding onto the pathway must be detected by a person with a visual disability using a cane				
Objects protruding more than 4" from the wall must be within 27" of the ground, or higher than 80"				
Curb on the pathway must have curb cuts at drives, parking and drop-offs				
Entrances				
Primary public entrances accessible to person using wheelchair, must be signed, gotten to independently, and not be the service entrance				
Level space extending 5 ft. from the door, interior and exterior of entrance doors				
Minimum 32" clear width opening (i.e. 36" door with standard hinge)				
At least 18" clear floor area on latch, pull side of door				
Door handle no higher than 48" and operable with a closed fist				
Vestibule is 4 ft plus the width of the door swinging into the space				
Entrance(s) on a level that makes elevators accessible				
Door mats less than 1/2" thick are securely fastened				
Door mats more than 1/2" thick are recessed				
Grates in path of travel have openings of 1/2" maximum				
Signs at non-accessible entrance(s) indicate direction to accessible entrance				
Emergency egress - alarms with flashing lights and audible signals, sufficiently lighted				

NOTES

NOTES

STAIRS and DOORS		Yes	No	Comments/Transition Notes
LOCATION	LBL.			
Specification	N/A			
Stairs				
No open risers				
Nosings not projecting				
Treads no less than 11" wide				
Handrails on both sides				
Handrails 34"-38" above tread				
Handrail extends a minimum of 1 ft beyond top and bottom riser (if no safety hazard and space permits)				
Handgrip oval or round				
Handgrip has a smooth surface				
Handgrip diameter between 1 1/4" and 1 1/2"				
1 1/2" clearance between wall and handrail				
Doors				
Minimum 32" clear opening				
At least 18" clear floor space on pull side of door				
Closing speed minimum 3 seconds to within 3" of the latch				
Maximum pressure 5 pounds interior doors				
Threshold maximum 1/2" high, beveled on both sides				
Hardware operable with a closed fist (no conventional door knobs or thumb latch devices)				
Hardware minimum 36"; maximum 48" above the floor				
Clear, level floor space extends out 5 ft from both sides of the door				
Door adjacent to revolving door is accessible and unlocked				
Doors opening into hazardous area have hardware that is knurled or roughened				

INSIDE BLDG. N/A

LBL.

NOTES

RESTROOMS - also see Doors and Vestibules	Yes	No	Comments/Transition Notes
LOCATION			
5 ft turning space measured 12" from the floor			
At least one Sink			
Clear floor space of 30" by 48" to allow a forward approach			
Mounted without pedestal or legs, height 34" to top of rim			
Extends at least 22" from the wall			
Open knee space a minimum 19" deep, 30" width, and 27" high			
Cover exposed pipes with insulation			
Faucets operable with closed fist (lever or spring activated handle)			
At least one Stall:			
Accessible to person using wheelchair at 60" wide by 72" deep			
Stall door is 36" wide			
Stall door swings out			
Stall door is self closing			
Stall door has a pull latch			
Lock on stall door is operable with a closed fist, and 32" above the floor			
Coat hook is 54" high			
Toilet			
8" from center to nearest side wall			
42" minimum clear space from center to farthest wall or fixture			
Top of seat 17"-19" above the floor			
Grab Bars			
On back and side wall closest to toilet			
1/4" diameter			
1/2" clearance to wall			
Located 30" above and parallel to the floor			
Acid-etched or roughened surface			
42" long			
Fixtures			
Toilet paper dispenser is 24" above floor			
One mirror set a maximum 38" to bottom (if tilted, 42")			
Dispensers (towel, soap, etc) at least one of each a maximum 42" above the floor			

Not outside / Inside only

15K

NOTES

LOCATION		SPECIFICATION		Yes	No	Comments/Transition Notes
FLOORS, DRINKING FOUNTAINS, TELEPHONES		FLOORS				
		Non-slip surface				
		Carpeting is high-density, low pile, non-absorbent, stretched taut, securely anchored				
		Corridor width minimum is 3 ft				
		Objects (signs, ceiling lights, fixtures) can only protrude 4" into the path of travel from a height of 27" to 80" above the floor				
Drinking Fountains						
		Spouts no higher than 36" from floor to outlet				
		Hand operated push button or level controls				
		Spouts located near front with stream of water as parallel to front as possible				
		If recessed, recess a minimum 30" width, and no deeper than depth of fountain				
		If no clear knee space underneath, clear floor space 30" x 48" to allow parallel approach				
Telephones						
		Highest operating part a maximum 54" above the floor				
		Access within 12" of phone, 30" high by 30" wide				
		Adjustable volume control on headset so identified				
SIGNS, SIGNALS, AND SWITCHES						
Specification						
		Yes	No			Comments/Transition Notes
Switches, Controls and Signs						
		Switches and controls for light, heat, ventilation, windows, fire alarms, thermostats, etc, must be a minimum of 36" and a maximum of 48" above the floor for a forward reach, a maximum of 54" for a side reach				
		Electrical outlets centered no lower than 18" above the floor				
		Warning signals must be visual as well as audible				
Signs						
		Mounting height must be 60" to centerline of the sign				
		Within 18" of door jamb or recessed				
		Letters and numbers a t least 1/4" high				
		Letters and numbers raised .03"				
		Letters and numbers contrast with the background color				

Inside Study

W/A

LR

LOCATION	Specification	Yes	No	Comments/Transition Notes
	A minimum of 5% of the total tables must be accessible with clear space under the table top not less than 30" wide and 19" deep per seating space and not less than 27" clear from the ground to the underside of the table. An additional 29" clear space (totaling 48") must extend beyond the 19" clear space under the table to provide access			
	For tables without toe clearance, the knee space under the table must be at least 28" high, 30" wide and 24" deep.			
	Top of table no higher than 32" above ground			
	Surface of the clear ground space under and around the table must be stable, firm and slip-resistant, and evenly graded with a maximum slope of 2% in all directions			
	Accessible tables, grills and fire rings must have clear ground space of at least 36" around the perimeter			

N/A

LOCATION	Specification	Yes	No	Comments/Transition Notes
	Stalls 36" by 60" minimum, with a 36" door opening			
	Floors are pitched to drain in the stall at the corner farthest from entrance			
	Floors are non-slip surface			
	Controls operate by a single lever with a pressure balance mixing valve			
	Controls are located on the center wall adjacent to the hinged seat			
	Shower heads attached to a flexible metal hose			
	Shower heads attached to wall mounting adjustable from 42" to 72" above the floor			
	Seat is hinged and padded and at least 16" deep, folds upward, securely attached to side wall, height is 18" to the top of the seat, and at least 24" long			
	Soap trays without handhold features unless they can support 250 pounds			
	2 grab bars are provided, one 30" and one 48" long, or one continuous L shaped bar			
	Grab bars are placed horizontally at 36" above the floor line			

N/A

LOCATION	Specification	Yes	No	Comments/Transition Notes
	Ramp at least 34" wide with a non-slip surface extending into the shallow end, slope not exceeding 1:6 with handrails on both sides			
	Lifting device			
	Transfer area 18" above the path of travel and a minimum of 18" wide			
	Unobstructed path of travel not less than 48" wide around pool			
	Non-slip surface			

N/A

L-2L

1