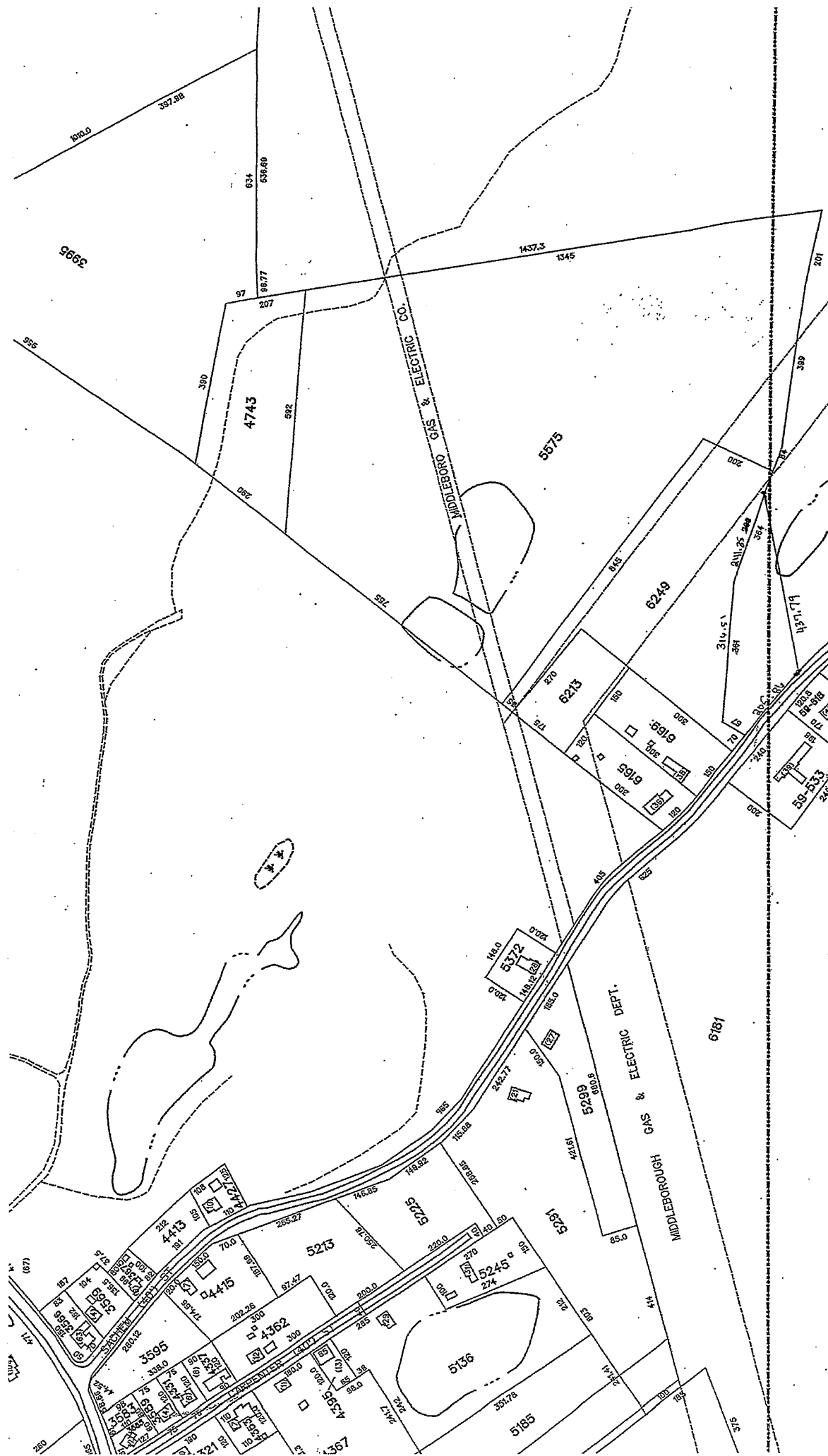
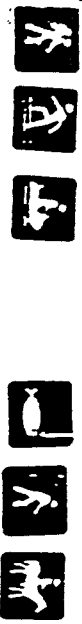




Pratt Farm M51
 1 acre 5575 6249 3635 2035 4743 2063
 4,3995



Lots, 5575, 6249, 3035, 2035
4743, 2063, 3995
Pratt Farm M51



Regulations

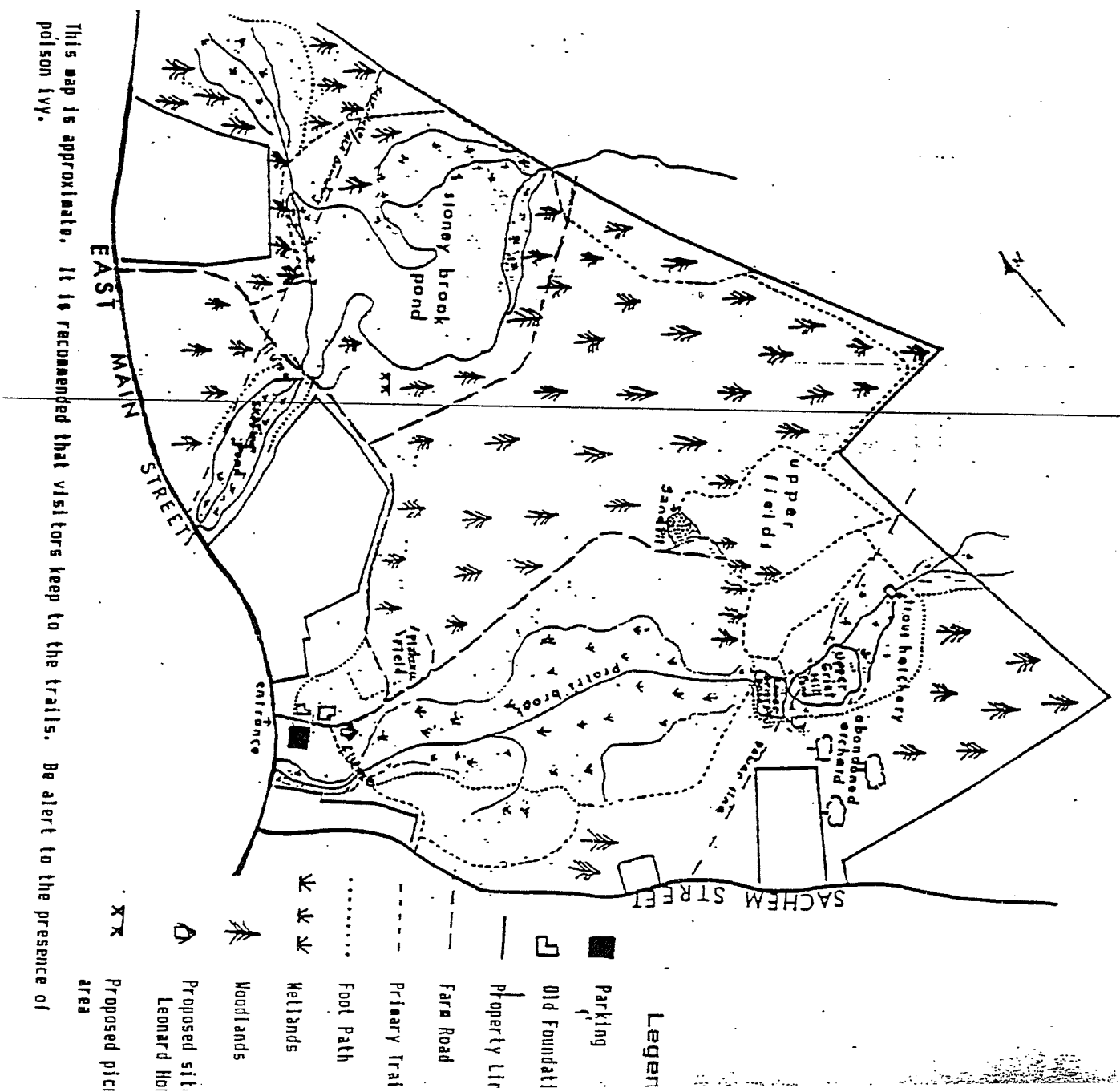
A detailed list of the Rules and Regulations for people visiting the Pratt Farm Conservation Area is posted at the entrance to the park. These were adopted in order to preserve and protect Conservation Land for the public.

Conservation Land is open to all, free of charge, for passive recreation. For group use, the Commission should be contacted and a "Request for Group Use" form filed.

- * NO FIRES * NO HUNTING * NO DUMPING OR LITTERING
- * NO ALCOHOLIC BEVERAGES may be possessed or consumed on Conservation Land.
- * NO MOTORIZED VEHICLES unless by permit of the Commission.
- * NO DISTURBANCE by noise or conduct that would interfere with the rightful enjoyment of the public.
- * NO SOLICITATION of business or distribution of goods, wares or circulars.
- * NO CONSTRUCTION of trails, railings, dams, buildings, lean-tos or signs.
- * NO DAMAGE to, destruction of, or removal of any structure, sign, historical artifact, plant, tree or shrub.
- * NO TRESPASSING on Conservation Land from one-half hour after SUNSET to one-half hour before SUNRISE.
- * NO PETS without a leash.

Violations shall be punished by fine up to \$100

The Pratt Farm Trail System



This map is approximate. It is recommended that visitors keep to the trails. Be alert to the presence of poison ivy.

- Legend**
- Parking
 - ◻ Old Foundation
 - Property line
 - Farm Road
 - - - Primary Trail
 - Foot Path
 - 业业 Wetlands
 - 木 Woodlands
 - △ Proposed site
 - xx Proposed picnic area

Trails through Time

The land where the Pratt Farm stands supported men long before the first English settlers came to Middleborough. There is evidence that an Indian settlement existed on or near the present farm. One of two major Indian paths to Plymouth led through the Pratt Farm.

What is today called the Pratt Farm was built by Nehemiah Allen in 1768. Ebenezer Pratt bought this homestead in 1777. The farm was then owned and operated by the Pratt family for over two hundred years.

A grist mill once stood by Mill Pond. Ice houses were constructed and a cranberry bog carved from the land. Dairy cows and beef cattle were raised, as well as horses and sheep. A saw mill processed local timber. Gravel was excavated and sold. A trout hatchery bristled with life. Fields and orchards produced abundant crops for man and animal.

In 1969 the Pratt Farm was sold to a developer and the buildings razed. Options for development included a golf course and country club, gravel removal operation or 43 houses. These plans did not meet with approval from town officials who then began to explore the possibility of acquiring the property for the town.

The Pratt Farm was acquired for open space preservation and passive recreation, as well as water resource protection purposes on March 31, 1986, utilizing a Self Help Grant from the Massachusetts Executive Office of Environmental Affairs, Division of Conservation Services.

For more information on local history, visit the Middleborough Library.

A Walk with Nature



From Herons, geese and ducks to owls, hawks and a vast array of song birds, thirty-four years of recorded bird sightings on the Pratt Farm has produced a list of 158 species.

Amphibians and reptiles include salamanders, frogs, turtles and snakes. Mammals range from opossum to squirrels and chipmunks to the occasional white-tail deer, red fox and river otter. Walkingsticks, dragonflies and a rainbow of butterflies are among the multitude of invertebrates which call the fields of wildflowers and forested hillsides home.

Pratt Farm's ponds and streams have provided habitat for brook trout, bluegills, large-mouthed bass, golden shiners, hornbout and grass pickerel.

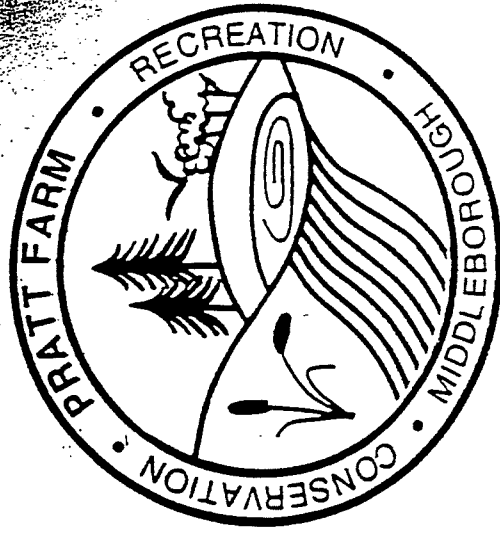
Your best hiking companions might be a field guide, binoculars and a camera, as you enjoy the nature around you.



The Conservation Commission does not assume, for itself or the Town of Middleborough, liability for any personal injuries or damage to personal property.

We hope that you enjoyed your visit to the Pratt Farm. We appreciate your comments and suggestions. If you would like to help maintain the Pratt Farm and other Middleborough Open Space Projects, please write or call Middleborough Conservation Commission, Middleborough Town Hall, Middleborough, MA 02346 (508) 946-0511.

This brochure was produced in cooperation with the Plymouth County Development Council.



The Welcome to The Pratt Farm

...of Middleborough, Massachusetts, 130 acre site preserved as a Cooperative Conservation Project of the Middleborough Conservation Commission at the Commonwealth of Massachusetts.

The Pratt Farm provides Middleborough residents and our visitors with tranquil setting for hiking, nature walks, fishing, horseback riding, snowmobiling, cross country skiing, picnic ing, nature photography and quiet contemplation.

The wide diversity of native vegetation and topography consisting of open fields, rolling hills, woodlands, wetlands, ponds and streams provides habitat for many interesting wildlife species including a variety of small mammals, birds, reptiles and fish.

We hope that you enjoy your visit to the Pratt Farm, taking away with you a sense of man's bond with nature and leaving behind only your footprints.

Located on Route 105 (East Main Street)
Just east of Schem Street

5/12/11

Judy Bigelow Costa + Patricia Cassidy

LOCATION: Pratt Farm E. Main St. (pt. 105)

Facility Inventory

ACTIVITY	EQUIPMENT	NOTES
Picnic Facilities	Tables & Benches <i>Yes ①</i>	Located adjacent to accessible paths <i>Yes</i>
		Access to Open Spaces <i>Yes</i>
	Grills <i>no</i>	Back and Arm Rests <i>no</i>
		Adequate number <i>no</i> <i>only 1</i>
	Trash Cans <i>Not Now</i>	Height of Cooking Surface <i>N/A</i>
		Located adjacent to accessible paths <i>no</i>
Picnic Shelters <i>no</i>	Located adjacent to accessible paths <i>no</i>	
	Located near accessible water fountains, trash can, restroom, parking, etc.	
Trails	Surface material <i> dirt, some hard pack</i>	
	Dimensions <i>6-12ft</i>	
	Rails <i>no</i>	
	Signage (for visually impaired) <i>no</i>	
Swimming Facilities	Pools	Entrance
		Location from accessible parking
	Beaches	Safety features i.e. warning for visually impaired
		Location from accessible path into water <i>N/A</i>
		Handrails
		Location from accessible parking
Shade provided		
Play Areas (tot lots)	All Play Equipment i.e. swings, slides	Same experience provided to all
	Access Routes	Located adjacent to accessible paths <i>N/A</i>
Game Areas: *ballfield *basketball *tennis	Access Routes	Enough space between equipment for wheelchair
		Located adjacent to accessible paths
	Equipment	Berm cuts onto courts <i>N/A</i>
		Height
Boat Docks <i>N/A</i>	Access Routes	Dimensions
		Spectator Seating
Fishing Facilities <i>Stoney Brook Pond</i>	Access Routes	Located adjacent to accessible paths
		Handrails <i>no</i>
	Equipment	Arm Rests <i>no</i>
		Bait Shelves <i>no</i>
		Handrails <i>no</i>
		Fish Cleaning Tables <i>no</i>
Programming	Are special programs at your facilities accessible?	Learn-to-Swim <i>N/A</i>
		Guided Hikes <i>Yes (most of center path)</i>
		Interpretive Programs <i>Yes (Field Area near parking)</i>
Services and Technical Assistance	Information available in alternative formats i.e. for visually impaired <i>no</i>	
	Process to request interpretive services (i.e. sign language interpreter) for meetings	

Main Trail - needs grading
 (center trail) - especially area after bridge at beginning

could find out

LOCATION **Pratt Farm**

PARKING			
Total Spaces	Required Accessible Spaces		
Up to 25 ✓	1 space		
26-50	2 spaces		
51-75	3 spaces		
76-100	4 spaces		
101-150	5 spaces		
151-200	6 spaces		
201-300	7 spaces		
301-400	8 spaces		
401-500	9 spaces		
Specification for Accessible Spaces	Yes	No	Comments/Transition Notes
Accessible space located closest to accessible entrance	✓		
Where spaces cannot be located within 200 ft of accessible entrance, drop-off area is provided within 100 ft.			N/A
Minimum width of 13 ft includes 8 ft space plus 5 ft access aisle		✓	
Van space — minimum of 1 van space for every accessible space, 8 ft wide plus 8 ft aisle. Alternative is to make all accessible spaces 11 ft wide with 5 ft aisle.		✓	
Sign with international symbol of accessibility at each space or pair of spaces		✓	
Sign minimum 5 ft, maximum 8 ft to top of sign		✓	no signs
Surface evenly paved or hard-packed (no cracks)		✓	Lot needs to be graded - Gravel pit
Surface slope less than 1:20, 5%			?
Curbcut to pathway from parking lot at each space or pair of spaces, if sidewalk (curb) is present		✓	
Curbcut is a minimum width of 3 ft, excluding sloped sides, has sloped sides, all slopes not to exceed 1:12, and textured or painted yellow		✓	
RAMPS			
Specification	Yes	No	Comments/Transition Notes
Slope Maximum 1:12			
Minimum width 4 ft between handrails			
Handrails on both sides if ramp is longer than 6 ft			
Handrails at 34" and 19" from ramp surface			
Handrails extend 12" beyond top and bottom			
Handgrip oval or round			
Handgrip smooth surface			
Handgrip diameter between 1 1/4" and 2"			
Clearance of 1 1/2" between wall and wall rail			
Non-slip surface			
Level platforms (4ft x 4 ft) at every 30 ft, at top, at bottom, at change of direction			

near picnic Area

Gravel pit

need for the bowl field area

10

LOCATION

Pratt Farm

11/15/11

SITE ACCESS, PATH OF TRAVEL, ENTRANCES

Specification	Yes	No	Comments/Transition Notes
Site Access			
Accessible path of travel from passenger disembarking area and parking area to accessible entrance	✓		But could be improved
Disembarking area at accessible entrance	✓		
Surface evenly paved or hard-packed		✓	
No ponding of water	✓	✓	Some areas do pond w/ water
Path of Travel			
Path does not require the use of stairs	✓		
Path is stable, firm and slip resistant	✓		
3 ft wide minimum	✓		
Slope maximum 1:20 (5%) and maximum cross pitch is 2% (1:50).			?
Continuous common surface, no changes in level greater than 1/2 inch		✓	
Any objects protruding onto the pathway must be detected by a person with a visual disability using a cane	✓		
Objects protruding more than 4" from the wall must be within 27" of the ground, or higher than 80"			?
Curb on the pathway must have curb cuts at drives, parking and drop-offs		✓	
Entrances			
Primary public entrances accessible to person using wheelchair, must be signed, gotten to independently, and not be the service entrance			
Level space extending 5 ft. from the door, interior and exterior of entrance doors			
Minimum 32" clear width opening (i.e. 36" door with standard hinge)			
At least 18" clear floor area on latch, pull side of door			
Door handle no higher than 48" and operable with a closed fist			N/A
Vestibule is 4 ft plus the width of the door swinging into the space			
Entrance(s) on a level that makes elevators accessible			
Door mats less than 1/2" thick are securely fastened			
Door mats more than 1/2" thick are recessed			
Grates in path of travel have openings of 1/2" maximum			
Signs at non-accessible entrance(s) indicate direction to accessible entrance			
Emergency egress - alarms with flashing lights and audible signals, sufficiently lighted			

need to be graded

NOTES

LOCATION

Pratt Farm

STAIRS and DOORS			
Specification	Yes	No	Comments/Transition Notes
Stairs			
No open risers			
Nosings not projecting			
Treads no less than 11" wide			
Handrails on both sides			N/A
Handrails 34"-38" above tread			
Handrail extends a minimum of 1 ft beyond top and bottom riser (if no safety hazard and space permits)			
Handgrip oval or round			
Handgrip has a smooth surface			
Handgrip diameter between 1 1/4" and 1 1/2"			
1 1/2" clearance between wall and handrail			
Doors			
Minimum 32" clear opening			
At least 18" clear floor space on pull side of door			
Closing speed minimum 3 seconds to within 3" of the latch			
Maximum pressure 5 pounds interior doors			N/A
Threshold maximum 1/2" high, beveled on both sides			
Hardware operable with a closed fist (no conventional door knobs or thumb latch devices)			
Hardware minimum 36", maximum 48" above the floor			
Clear, level floor space extends out 5 ft from both sides of the door			
Door adjacent to revolving door is accessible and unlocked			
Doors opening into hazardous area have hardware that is knurled or roughened			

NOTES

LOCATION

Pratt Farm

RESTROOMS – also see Doors and Vestibules

Specification	Yes	No	Comments/Transition Notes
5 ft turning space measured 12" from the floor			
At least one Sink:			
Clear floor space of 30" by 48" to allow a forward approach			
Mounted without pedestal or legs, height 34" to top of rim			
Extends at least 22" from the wall			
Open knee space a minimum 19" deep, 30" width, and 27" high			
Cover exposed pipes with insulation			
Faucets operable with closed fist (lever or spring activated handle)			
At least one Stall:			
Accessible to person using wheelchair at 60" wide by 72" deep			
Stall door is 36" wide			<i>N/A</i>
Stall door swings out			
Stall door is self closing			
Stall door has a pull latch			
Lock on stall door is operable with a closed fist, and 32" above the floor			
Coat hook is 54" high			
Toilet			
18" from center to nearest side wall			
42" minimum clear space from center to farthest wall or fixture			
Top of seat 17"-19" above the floor			
Grab Bars			
On back and side wall closest to toilet			
1/4" diameter			
1/2" clearance to wall			
Located 30" above and parallel to the floor			
Acid-etched or roughened surface			
42" long			
Fixtures			
Toilet paper dispenser is 24" above floor			
One mirror set a maximum 38" to bottom (if tilted, 42")			
Dispensers (towel, soap, etc) at least one of each a maximum 42" above the floor			

NOTES

LOCATION

Pratt Farm

FLOORS, DRINKING FOUNTAINS, TELEPHONES

Specification	Yes	No	Comments/Transition Notes
Floors			
Non-slip surface			
Carpeting is high-density, low pile, non-absorbent, stretched taut, securely anchored			
Corridor width minimum is 3 ft			N/A
Objects (signs, ceiling lights, fixtures) can only protrude 4" into the path of travel from a height of 27" to 80" above the floor			
Drinking Fountains			
Spouts no higher than 36" from floor to outlet			
Hand operated push button or level controls			N/A
Spouts located near front with stream of water as parallel to front as possible			
If recessed, recess a minimum 30" width, and no deeper than depth of fountain			
If no clear knee space underneath, clear floor space 30" x 48" to allow parallel approach			
Telephones			
Highest operating part a maximum 54" above the floor			N/A
Access within 12" of phone, 30" high by 30" wide			
Adjustable volume control on headset so identified			
SIGNS, SIGNALS, AND SWITCHES			
Specification	Yes	No	Comments/Transition Notes
Switches, Controls and Signs			
Switches and controls for light, heat, ventilation, windows, fire alarms, thermostats, etc, must be a minimum of 36" and a maximum of 48" above the floor for a forward reach, a maximum of 54" for a side reach			
Electrical outlets centered no lower than 18" above the floor			N/A
Warning signals must be visual as well as audible			
Signs			
Mounting height must be 60" to centerline of the sign			
Within 18" of door jamb or recessed			
Letters and numbers at least 1/4" high			
Letters and numbers raised .03"			
Letters and numbers contrast with the background color			

NOTES

LOCATION

Pratt Farm

SWIMMING POOLS - accessibility can be via ramp, lifting device, or transfer area			
Specification	Yes	No	Comments/Transition Notes
Ramp at least 34" wide with a non-slip surface extending into the shallow end, slope not exceeding 1:6 with handrails on both sides			
Lifting device			N/A
Transfer area 18" above the path of travel and a minimum of 18" wide			
Unobstructed path of travel not less than 48" wide around pool			
Non-slip surface			

LOCATION

SHOWER ROOMS - Showers must accommodate both wheel-in and transfer use

Specification	Yes	No	Comments/Transition Notes
Stalls 36" by 60" minimum, with a 36" door opening			
Floors are pitched to drain the stall at the corner farthest from entrance			
Floors are non-slip surface			
Controls operate by a single lever with a pressure balance mixing valve			
Controls are located on the center wall adjacent to the hinged seat			N/A
Shower heads attached to a flexible metal hose			
Shower heads attached to wall mounting adjustable from 42" to 72" above the floor			
Seat is hinged and padded and at least 16" deep, folds upward, securely attached to side wall, height is 18" to the top of the seat, and at least 24" long			
Soap trays without handhold features unless they can support 250 pounds			
2 grab bars are provided, one 30" and one 48" long, or one continuous L shaped bar			
Grab bars are placed horizontally at 36" above the floor line			

LOCATION

PICNICKING

Specification	Yes	No	Comments/Transition Notes
A minimum of 5% of the total tables must be accessible with clear space under the table top not less than 30" wide and 19" deep per seating space and not less than 27" clear from the ground to the underside of the table. An additional 29" clear space (totaling 48") must extend beyond the 19" clear space under the table to provide access	✓		<i>only one table (ground top) 2 attached benches 2 areas to pull wheel chair up to</i>
For tables without toe clearance, the knee space under the table must be at least 28" high, 30" wide and 24" deep.	✓		?
Top of table no higher than 32" above ground			
Surface of the clear ground space under and around the table must be stable, firm and slip-resistant, and evenly graded with a maximum slope of 2% in all directions	✓		
Accessible tables, grills and fire rings must have clear ground space of at least 36" around the perimeter			N/A

