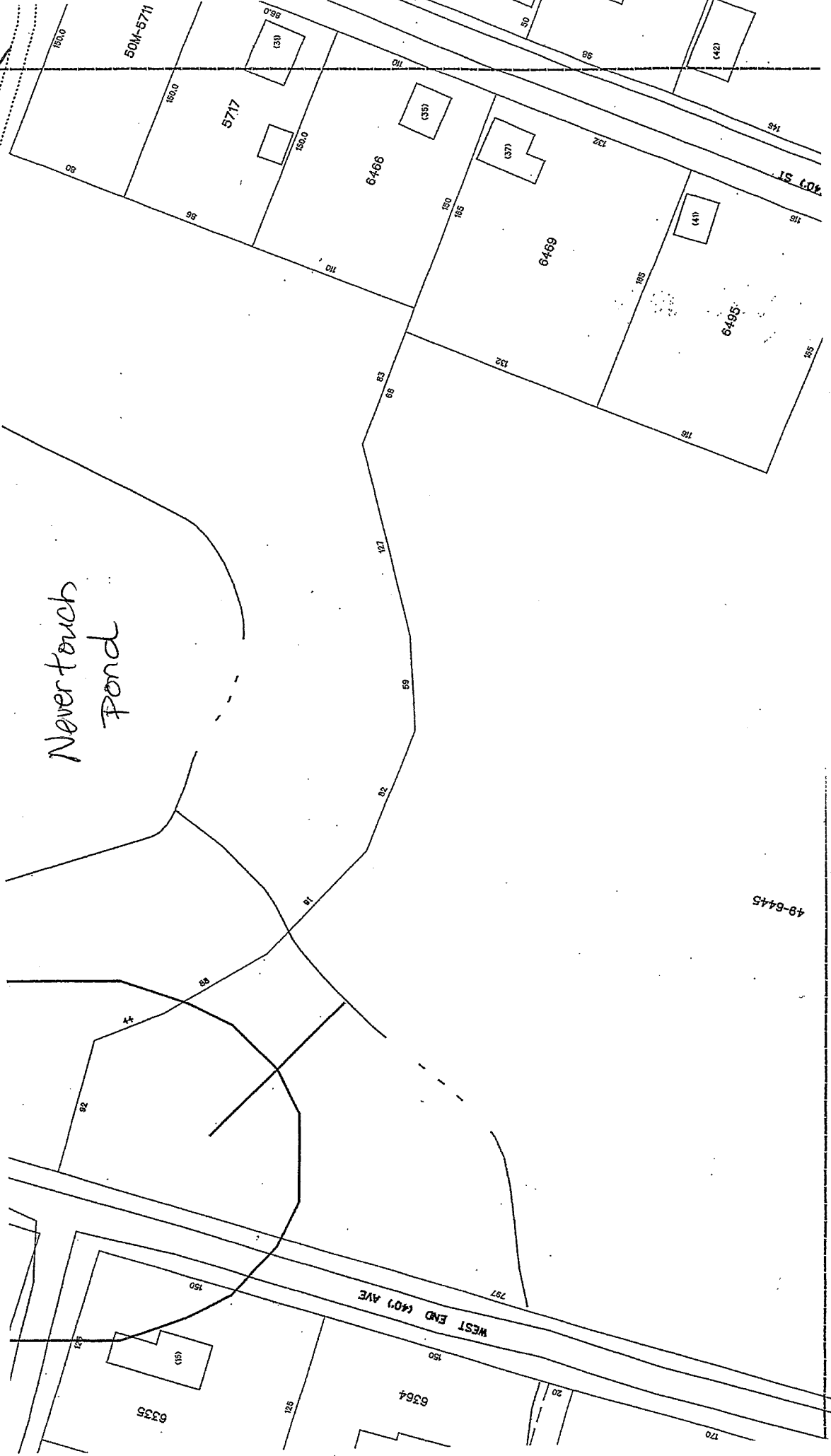


✓ West Side Playground (West End Ave.) M. 49 & L. 6445



Map 49Q, Lot 6445

LOCATION: West Side Playground (West End Ave.)

Facility Inventory		LOCATION:
ACTIVITY	EQUIPMENT	NOTES
Picnic Facilities <i>no walkway</i>	Tables & Benches	Located adjacent to accessible paths
		Access to Open Spaces
		Back and Arm Rests
		Adequate number
	Grills <i>- Fire pit not working</i>	Height of Cooking Surface
Trash Cans	Located adjacent to accessible paths	
	Located adjacent to accessible paths	
	Located near accessible water fountains, trash can, restroom, parking, etc.	
Picnic Shelters	Located near accessible water fountains, trash can, restroom, parking, etc.	
	Surface material	
	Dimensions	
	Rails	
Trails	Signage (for visually impaired)	
	Entrance	
	Location from accessible parking	
	Safety features i.e. warning for visually impaired	
Swimming Facilities	Pools	Location from accessible path into water
		Handrails
	Beaches	Location from accessible parking
		Shade provided
Play Areas (tot lots)	All Play Equipment i.e. swings, slides	Same experience provided to all
	Access Routes	Located adjacent to accessible paths Enough space between equipment for wheelchair
Game Areas: <i>*ballfield</i> <i>*basketball</i> <i>*tennis</i>	Access Routes	Located adjacent to accessible paths
		Berm cuts onto courts
	Equipment	Height
		Dimensions
Boat Docks	Access Routes	Located adjacent to accessible paths
		Handrails
Fishing Facilities	Access Routes	Located adjacent to accessible paths
		Handrails
	Equipment	Arm Rests
		Bait Shelves
		Handrails
Programming	Are special programs at your facilities accessible?	Fish Cleaning Tables
		Learn-to-Swim
		Guided Hikes
Services and Technical Assistance	Information available in alternative formats i.e. for visually impaired	Interpretive Programs
		Process to request interpretive services (i.e. sign language interpreter) for meetings

not wheelchair accessible - Plastic curbing around Play Areas, not walkways, not geared toward handicap child, no special swing, Grandparent may have issues getting around

Whole playground - does not follow ADA

West Side Playground

not level

LOCATION

PARKING

Total Spaces	Required Accessible Spaces		
Up to 25	1 space		
26-50	2 spaces		
51-75	3 spaces		
76-100	4 spaces		
101-150	5 spaces		
151-200	6 spaces		
201-300	7 spaces		
301-400	8 spaces		
401-500	9 spaces		
Specification for Accessible Spaces	Yes	No	Comments/Transition Notes
Accessible space located closest to accessible entrance		✓	
Where spaces cannot be located within 200 ft of accessible entrance, drop-off area is provided within 100 ft.			
Minimum width of 13 ft includes 8 ft space plus 5 ft access aisle			
Van space – minimum of 1 van space for every accessible space, 8 ft wide plus 8 ft aisle. Alternative is to make all accessible spaces 11 ft wide with 5 ft aisle.			
Sign with international symbol of accessibility at each space or pair of spaces			
Sign minimum 5 ft, maximum 8 ft to top of sign			
Surface evenly paved or hard-packed (no cracks)			
Surface slope less than 1:20, 5%			
Curbscut to pathway from parking lot at each space or pair of spaces, if sidewalk (curb) is present			
Curbscut is a minimum width of 3 ft, excluding sloped sides, has sloped sides, all slopes not to exceed 1:12, and textured or painted yellow			
RAMPS			
Specification	Yes	No	Comments/Transition Notes
Slope Maximum 1:12			
Minimum width 4 ft between handrails			
Handrails on both sides if ramp is longer than 6 ft			
Handrails at 34" and 19" from ramp surface			
Handrails extend 12" beyond top and bottom			
Handgrip oval or round			
Handgrip smooth surface			
Handgrip diameter between 1 1/4" and 2"			
Clearance of 1 1/2" between wall and wall rail			
Non-slip surface			
Level platforms (4ft x 4 ft) at every 30 ft, at top, at bottom, at change of direction			

one bench for players, no bleachers
3 Ball fields

Westside Playground

LOCATION

SITE ACCESS, PATH OF TRAVEL, ENTRANCES			
Specification	Yes	No	Comments/Transition Notes
Site Access			
Accessible path of travel from passenger disembarking area and parking area to accessible entrance			
Disembarking area at accessible entrance			
Surface evenly paved or hard-packed			
No ponding of water			
Path of Travel			
Path does not require the use of stairs			
Path is stable, firm and slip resistant			
3 ft wide minimum			
Slope maximum 1:20 (5%) and maximum cross pitch is 2% (1:50).			
Continuous common surface, no changes in level greater than 1/2 inch			
Any objects protruding onto the pathway must be detected by a person with a visual disability using a cane			
Objects protruding more than 4" from the wall must be within 27" of the ground, or higher than 80"			
Curb on the pathway must have curb cuts at drives, parking and drop-offs			
Entrances			
Primary public entrances accessible to person using wheelchair, must be signed, gotten to independently, and not be the service entrance			
Level space extending 5 ft. from the door, interior and exterior of entrance doors			
Minimum 32" clear width opening (i.e. 36" door with standard hinge)			
At least 18" clear floor area on latch, pull side of door			
Door handle no higher than 48" and operable with a closed fist			
Vestibule is 4 ft plus the width of the door swinging into the space			
Entrance(s) on a level that makes elevators accessible			
Door mats less than 1/2" thick are securely fastened			
Door mats more than 1/2" thick are recessed			
Grates in path of travel have openings of 1/2" maximum			
Signs at non-accessible entrance(s) indicate direction to accessible entrance			
Emergency egress - alarms with flashing lights and audible signals, sufficiently lighted			

NOTES

Basketball court - rocky incline to get there
Not accessible

West Side Playground

LOCATION

STAIRS and DOORS			
Specification	Yes	No	Comments/Transition Notes
N/A			
Stairs			
No open risers			
Nosings not projecting			
Treads no less than 11" wide			
Handrails on both sides			
Handrails 34"-38" above tread			
Handrail extends a minimum of 1 ft beyond top and bottom riser (if no safety hazard and space permits)			
Handgrip oval or round			
Handgrip has a smooth surface			
Handgrip diameter between 1 1/4" and 1 1/2"			
1 1/2" clearance between wall and handrail			
Doors			
Minimum 32" clear opening			
At least 18" clear floor space on pull side of door			
Closing speed minimum 3 seconds to within 3" of the latch			
Maximum pressure 5 pounds interior doors			
Threshold maximum 1/2" high, beveled on both sides			
Hardware operable with a closed fist (no conventional door knobs or thumb latch devices)			
Hardware minimum 36", maximum 48" above the floor			
Clear, level floor space extends out 5 ft from both sides of the door			
Door adjacent to revolving door is accessible and unlocked			
Doors opening into hazardous area have hardware that is knurled or roughened			

NOTES

LOCATION

West Side Playground

RESTROOMS – also see Doors and Vestibules

N/A

Specification	Yes	No	Comments/Transition Notes
5 ft turning space measured 12" from the floor			
At least one Sink:			
Clear floor space of 30" by 48" to allow a forward approach			
Mounted without pedestal or legs, height 34" to top of rim			
Extends at least 22" from the wall			
Open knee space a minimum 19" deep, 30" width, and 27" high			
Cover exposed pipes with insulation			
Faucets operable with closed fist (lever or spring activated handle)			
At least one Stall:			
Accessible to person using wheelchair at 60" wide by 72" deep			
Stall door is 36" wide			
Stall door swings out			
Stall door is self closing			
Stall door has a pull latch			
Lock on stall door is operable with a closed fist, and 32" above the floor			
Coat hook is 54" high			
Toilet			
18" from center to nearest side wall			
42" minimum clear space from center to farthest wall or fixture			
Top of seat 17"-19" above the floor			
Grab Bars			
On back and side wall closest to toilet			
1 1/4" diameter			
1 1/2" clearance to wall			
Located 30" above and parallel to the floor			
Acid-etched or roughened surface			
42" long			
Fixtures			
Toilet paper dispenser is 24" above floor			
One mirror set a maximum 38" to bottom (if tilted, 42")			
Dispensers (towel, soap, etc) at least one of each a maximum 42" above the floor			

NOTES

LOCATION

West Side Playground

FLOORS, DRINKING FOUNTAINS, TELEPHONES

Specification	Yes	No	Comments/Transition Notes
Floors			
Non-slip surface			
Carpeting is high-density, low pile, non-absorbent, stretched taut, securely anchored			
Corridor width minimum is 3 ft			
Objects (signs, ceiling lights, fixtures) can only protrude 4" into the path of travel from a height of 27" to 80" above the floor			
Drinking Fountains			
Spouts no higher than 36" from floor to outlet			
Hand operated push button or level controls			
Spouts located near front with stream of water as parallel to front as possible			
If recessed, recess a minimum 30" width, and no deeper than depth of fountain			
If no clear knee space underneath, clear floor space 30" x 48" to allow parallel approach			
Telephones			
Highest operating part a maximum 54" above the floor			
Access within 12" of phone, 30" high by 30" wide			
Adjustable volume control on headset so identified			

SIGNS, SIGNALS, AND SWITCHES

Specification	Yes	No	Comments/Transition Notes
Switches, Controls and Signs			
Switches and controls for light, heat, ventilation, windows, fire alarms, thermostats, etc, must be a minimum of 36" and a maximum of 48" above the floor for a forward reach, a maximum of 54" for a side reach			
Electrical outlets centered no lower than 18" above the floor			
Warning signals must be visual as well as audible			
Signs			
Mounting height must be 60" to centerline of the sign			
Within 18" of door jamb or recessed			
Letters and numbers at least 1 1/4" high			
Letters and numbers raised .03"			
Letters and numbers contrast with the background color			

NOTES

LOCATION West Side Playground

SWIMMING POOLS - accessibility can be via ramp, lifting device, or transfer area N/A			
Specification	Yes	No	Comments/Transition Notes
Ramp at least 34" wide with a non-slip surface extending into the shallow end, slope not exceeding 1:6 with handrails on both sides			
Lifting device			
Transfer area 18" above the path of travel and a minimum of 18" wide			
Unobstructed path of travel not less than 48" wide around pool			
Non-slip surface			

LOCATION

SHOWER ROOMS - Showers must accommodate both wheel-in and transfer use N/A			
Specification	Yes	No	Comments/Transition Notes
Stalls 36" by 60" minimum, with a 36" door opening			
Floors are pitched to drain the stall at the corner farthest from entrance			
Floors are non-slip surface			
Controls operate by a single lever with a pressure balance mixing valve			
Controls are located on the center wall adjacent to the hinged seat			
Shower heads attached to a flexible metal hose			
Shower heads attached to wall mounting adjustable from 42" to 72" above the floor			
Seat is hinged and padded and at least 16" deep, folds upward, securely attached to side wall, height is 18" to the top of the seat, and at least 24" long			
Soap trays without handhold features unless they can support 250 pounds			
2 grab bars are provided, one 30" and one 48" long, or one continuous L shaped bar			
Grab bars are placed horizontally at 36" above the floor line			

LOCATION

PICNICKING N/A			
Specification	Yes	No	Comments/Transition Notes
A minimum of 5% of the total tables must be accessible with clear space under the table top not less than 30" wide and 19" deep per seating space and not less than 27" clear from the ground to the underside of the table. An additional 29" clear space (totaling 48") must extend beyond the 19" clear space under the table to provide access			
For tables without toe clearance, the knee space under the table must be at least 28" high, 30" wide and 24" deep.			
Top of table no higher than 32" above ground			
Surface of the clear ground space under and around the table must be stable, firm and slip-resistant, and evenly graded with a maximum slope of 2% in all directions			
Accessible tables, grills and fire rings must have clear ground space of at least 36" around the perimeter			

